

Korte user
guide in map

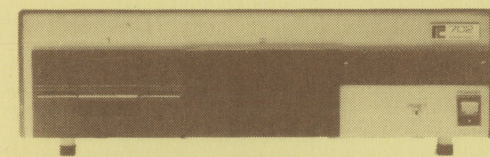
piccolo®

CENTRAL PROCESSING UNIT

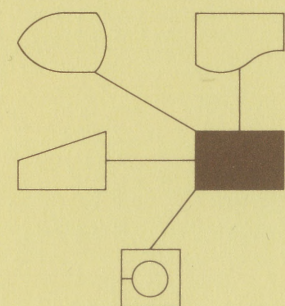
Voltage and consumption:
220 V + earth
50 Hz
150 W

Z80A microprocessor, 8 bits, 4MHz

ROM: 2KB
RAM: 48KB or 64KB
Access time: 480ns
Plugs:
Printer V24 25p D-plug (1200 bit/s)
Terminal V24 25p D-plug
Keyboard 25p D-plug
Parallel In/Out 25p D-plug
Display unit 75 ohm BNC



Dimensions and weight:
width = 460 mm
height = 140 mm
depth = 290 mm
weight = 10,5 kg including 1 mini flexible disc drive.



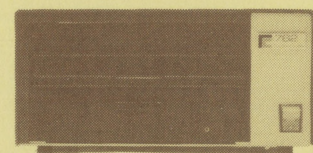
FLEXIBLE DISC DRIVE

Voltage and consumption of a detachable flexible disc drive:
220 V + earth
50 Hz
150 W

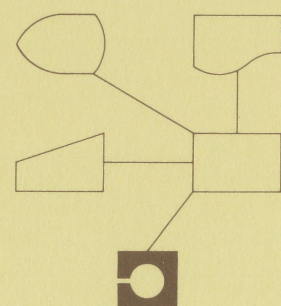
Built-in flexible disc drive (max. 2):
Flexible disc:
5 1/4" Single density, dual sided, 128 bytes per sector, 0.12MB or
5 1/4" Dual density, dual sided, 512 bytes per sector, 0.32MB.

Detachable flexible disc drive (max. 2):

Flexible disc:
8" Single density, single sided, 128 bytes per sector, 0.25MB or
8" Dual density, dual sided, 256/512/1024 bytes per sector, 1.2MB.



Dimensions and weight of a detachable flexible disc drive:
width = 290 mm
height = 140 mm
depth = 460 mm
weight = 13,5 kg



DISPLAY UNIT

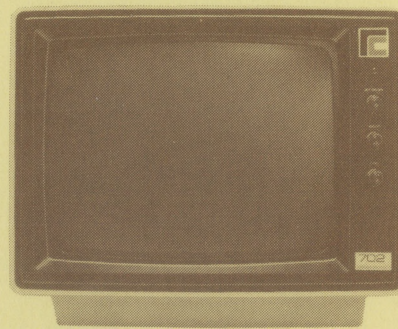
Voltage and consumption
15 DC (supplied by the central processing unit)
21 W

The display unit shows 80 characters per line in 25 lines in all. The reason for this is to make it compatible with normal display units, and because it lightens the building up of the screen picture.

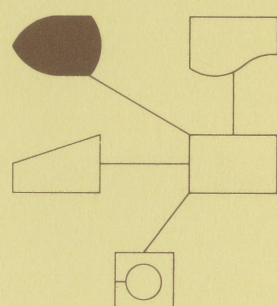
Character format:
5x7 dot contained in a 7x11 dot matrix.
The cursor is shown as a blinking field or line.

Set of characters:
96 char. ASCII (small and capital letters).
64 char. semi-graphic set of characters.

It is possible to show the characters in normal writing, inverted writing, and blinking writing on the display unit. These facilities can furthermore be combined arbitrarily.



Dimensions and weight:
width = 360 mm
height = 300 mm
depth = 330 mm
weight = 6.5 kg



KEYBOARD

The keyboard has a standard UK ASCII character set and special keys for cursor control and editing.

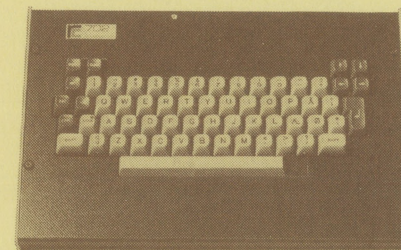
Display unit and keyboard are separated from each other.

The keyboard is controlled by an independent microprocessor, which means that the central processing unit is relieved of this function.

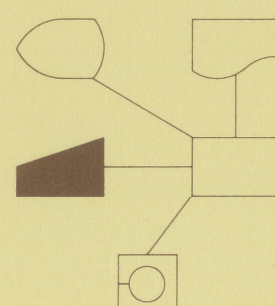
The keyboard contains keys for the following check functions:

Clear
Carriage return
Escape
Cursor UP
Cursor DOWN
Cursor LEFT
Cursor RIGHT
Insert one character
Delete one character
Rub out

If a key is pressed down for more than 0.7 seconds, the character will be repeated at an interval of 0.1 second, until the key is released.



Dimensions and weight:
width = 380 mm
height = 50 mm
depth = 235 mm
weight = 1.5 kg

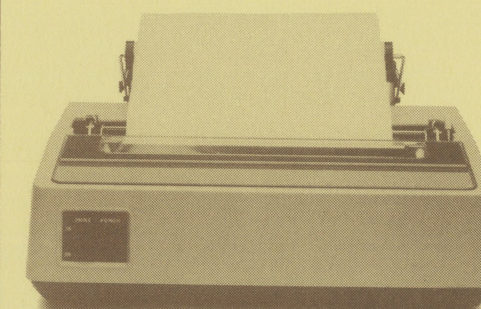


PRINTER

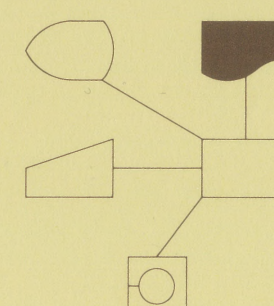
A matrix printer is offered by RCOMPUTER, with a capacity of 80 char/sec. with 80/132 positions on each line. Normal paper is used, either with feed holes or rolled up.

This comparatively small matrix printer is specially intended for users who only need to use the printer a couple of hours each day.

Printers for larger amounts of output can also be connected.



Dimensions and weight:
width = 342 mm
height = 176 mm incl. of paper roll
depth = 382 mm incl. of paper roll
weight = 6.5 kg



INTERFACE

Two identical communication channels which meet the electrical specifications in the V24 recommendations, corresponding to RS 232.

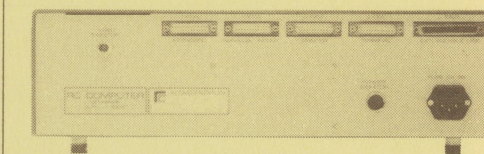
The two V24 channels will normally be used when a printer is to be connected and when connection to another computer is to be established, either direct or via modem.

The speed can be set between 50 BPS and 2400 BPS, and the method of transmission is asynchronous.

The signals used are:
PIN 2 TRANSMITTED DATA
PIN 3 RECEIVED DATA
PIN 4 REQUEST TO SEND
PIN 5 CLEAR TO SEND
PIN 7 SIGNAL GROUND
PIN 8 DATA CARRIER DETECTED
PIN 20 DATA TERMINAL READY

PARALLEL IN/OUT

An interface that makes it possible to use 8 bit parallel transfer of data to peripheral unit, or from a peripheral unit. The peripheral unit must be interfaced specially for this purpose, and the demands made on it appear in the specifications in the user guide.



RC COMPUTER
A/S REGNECENTRALEN af 1979

HEADQUARTERS: LAUTRUPBJERG 1 - DK 2750 BALLERUP - DENMARK
Phone: +45 2 65 80 00 - Cables: rcbairc - Telex: 35 214 rcbaiddk

**Kampenringweg 47
28 03 PE Gouda
Telefoon: (0 18 20) 294 55**