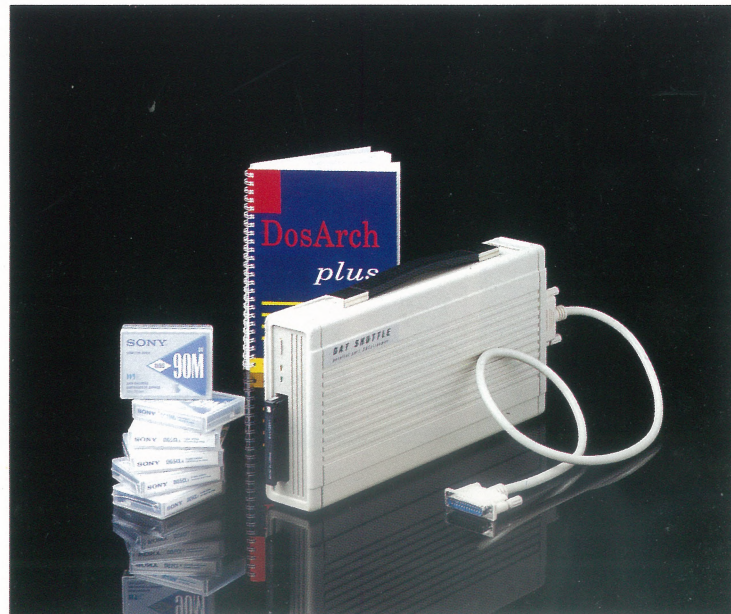


# T A P E S H U T T L E

*parallel port tapestreamer*



- ☑ *connects to the parallel port*
- ☑ *no controller cards needed*
- ☑ *very fast, reliable backup/restore up to 2 GB*
- ☑ *for all MS-Dos PC's & Novell NetWare*
- ☑ *installation within seconds*
- ☑ *concurrent printing through second parallel port*



## The concept

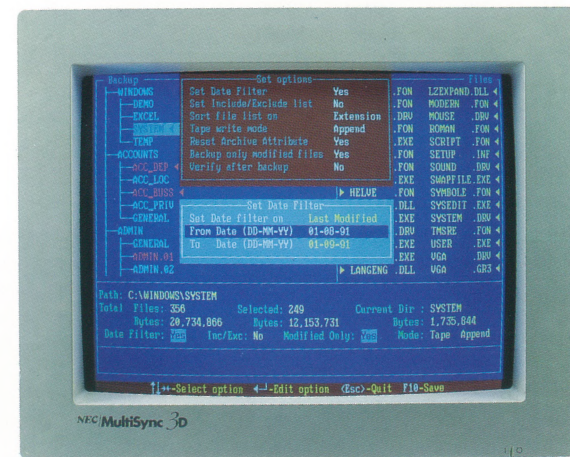
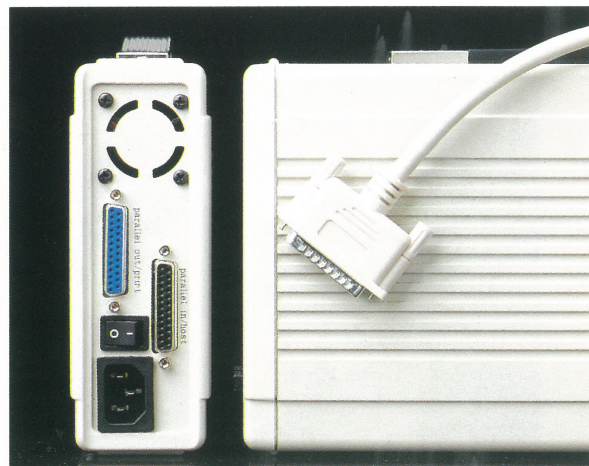
TapeShuttle is a portable tapestreamer that can easily be connected to the parallel port of any IBM (XT, AT, PS2) or compatible PC, without the need of controller cards. Installation is a matter of seconds. Just one tapestreamer will back up data of a larger number of PC's whether stand-alone or in a network environment.

## The application

In addition to safeguarding against erasure of data and protection against theft there is a number of other applications; for example flexible data transfer from one PC to another or installing new PC's.

## The technology

Tape drives of TapeShuttle are built by Archive and Teac, the leading manufacturers of tapestreamers. Data cartridges are produced by 3M and data cassettes by Verbatim. The inventors of these media. Connection to the parallel port, avoiding the need for expensive controller cards is made possible by the so called PSCSI device standard. This innovation supports all centronics printers a 100%. This means that uni- as well as bi-directional interfaces are supported. In addition to the parallel (in) port (connection PC-TapeShuttle), TapeShuttle has a second parallel port on its back panel. This parallel (out) port allows the printer to be looped through the shuttle, thus enabling the user to continue using the printer despite the fact that the parallel port of the PC has been connected to the PC. Tape Shuttle uses a well-proven technology resulting in user friendly, high performance, with Tape Shuttle you don't run the risk of losing your valuable data.



## Stand-alone environment

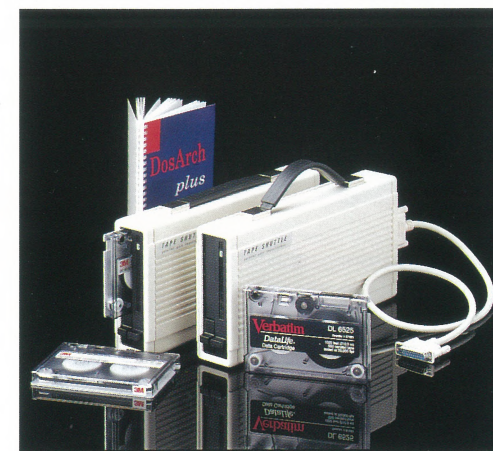
In an office with a number of stand-alone PC's and laptop computers the parallel TapeShuttle offers tremendous advantages over any other solution. The DosArch software offers a.o. the append utility allowing a number of datasets to be divided over one tape or the span utility making it possible to divide one dataset over a number of tapes. The menu driven software offers a clear directory tree structure. A comprehensive verify control, fast restore, password protection, colour adjustments etc.: if required, the on-line F1 "help" key gives an answer to any questions the user may have.

## Network environment

Also in a network the Tape Shuttle offers attractive features. The standard DosArch Plus software allows the user to safeguard the files of a Novell server 286/386. The software also offers a solution for NetWare's bindery and locked files. When users are accessing a file at the time of backup they will get a message "This file is being archived, can you come out for a moment?" open files can also be skipped and will be written onto a "Log file".

## DAT SHUTTLE

A new generation in tape technology, the Archive 4 mm DDS DAT, is designed for plug and play operation with stand-alone PC's and Dos based networks. The parallel port DAT Shuttle works extremely fast with any IBM Compatible PC. The DAT Shuttle with DosArch Plus software (**random access operating**) proved to be the fastest portable parallel solution on the market.



## Specifications

**Product** Tape Shuttle 60  
**Tapedrive** TEAC MT-2ST/45S  
**Capacity** 60 MB  
**Tapes** ST600 Verbatim  
**Backup speed** average back-up speed 4-5 MB per/min.

**Product** Tape Shuttle 250  
**Tapedrive** Archive model 2150  
**Capacity** 250/150/60 MB  
**Tapes** DC 6250/6150/600A 3M, Verbatim  
**Backup speed** average back-up speed 5 MB per/min.

**Product** Tape Shuttle 525  
**Tapedrive** Archive model 2525  
**Capacity** 525/250/150/60 MB  
**Tapes** DC 6525/6250/6150/600A 3M, Verbatim  
**Backup speed** average back-up speed 7 MB per/min.

**Product** DAT Shuttle 2000  
**Tapedrive** Archive Python 4520  
**Capacity** 2.0/1.3 GB  
**Tapes** 4 mm 90M/60M Sony  
**Backup speed** average back-up speed 8 MB per/min.

## General Specifications

**Compatibility**  
 MS-Dos 3.× 4.× 5.×  
 Novell NetWare 286/386  
 PC Buses: ISA, EISA, MCA

**Format**  
 preformatted

**Interface (out)**  
 standard parallel port

**Interface (in)**  
 standard parallel port

**Parallel cable**  
 standard parallel

**Power supply**  
 built-in 110/230 V

**Dimensions**  
 33 × 16 × 7 cm

**Weight**  
 3 kg.

**Warranty**  
 1 year parts/labor

**Options**  
 carrying case  
 cleaning tapes

## The results

The parallel tape backup unit is **the** solution for systems managers, computer departments, offices with many PC's; users of laptop computers and Novell networks.

- extremely fast transfer rate for fast backup of computer data
- flexible application due to easy connection via the parallel printer port
- reliable storage of data through superior technology
- superbly user friendly due to the menu driven software, with extensive backup facilities for stand-alone as well a network environment.



Call us today for information on other parallel port products like Disk-, Opto- and CD ROM Shuttle.

### Main-menu Dosarch Plus software

#### Backup Menu

- Create Script file
- Append & Overwrite
- Archive Files Only
- Select on Date
- Include/Exclude Files
- Sort on files, byname, size, extension and date & time
- Reset Archive Bit
- Backup Modified Files
- Verify After Backup
- Tape Label
- Tape Password
- Allow other users to append
- Session Name
- Session Password
- Tape Mode (O/A)

#### Restore Menu

- Restore This Session
- Goto Next Session
- Goto Selected Session
- Goto Selected Directory
- Set Date Filter
- Include/Exclude Files
- Sort Files
- Create New Directory
- Fast Restore

#### Verify Menu

- Verify This Session
- Goto Next Session
- Goto Selected Session
- Goto Selected Directory

#### Utilities Menu

- Rewind Tape
- Retension Tape
- Erase Tape
- Read/Write Test

### All Tape/DAT Shuttles come with:

- Dosarch Plus Software that can be copied freely
- parallel cable
- manuals
- built-in power supply
- one year warranty